

TINY SEPUKU ☺ © 2010

DEAR TINY,

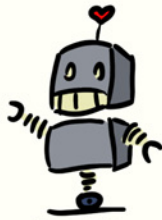
ANY THOUGHTS ON HOW TO
MAKE VALENTINE'S DAY MORE
THAN JUST A CARD AND SOME
CANDY?

- TONY
MICHIGAN

3 EXAMINE THE AREA
OPPOSITE:



6 FIND A BOOK WITH
THE TITLE:
AND GO TO PAGE:



A FILL OUT CLUE CARDS. B CUT THEM OUT ON DOTTED LINES. C HIDE THEM
IN THEIR APPROPRIATE PLACES. D GIVE YOUR VALENTINE THE FIRST CLUE.

1 HOORAY! YOU ARE ON A
VALENTINE'S TREASURE
HUNT! LET'S GET STARTED!
LOOK BEHIND:



4 LOOK ON TOP OF:



7 REACH INSIDE:



2 THE NEXT CLUE IS
BESIDE:



5 SEARCH THE SPACE
UNDER:



8 YAY!!! YOU FOUND IT!
HAPPY VALENTINE'S DAY!

... OR CALL THE
COPS, DEPENDING
ON WHAT YOU FIND
NEXT TO THIS NOTE.



PRINT: TINYSEPUKU.COM/CLUES WRITE: TINYSEPUKU@HOTMAIL.COM